



Company : Apache

Well : Speke South-1

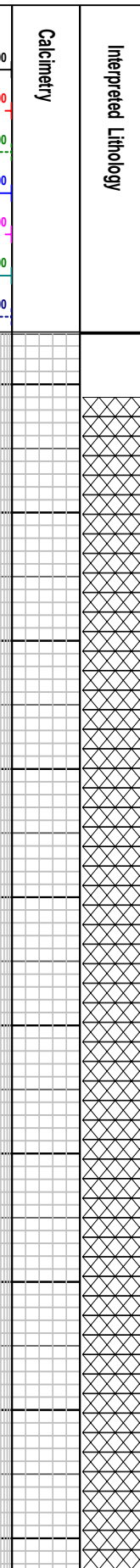
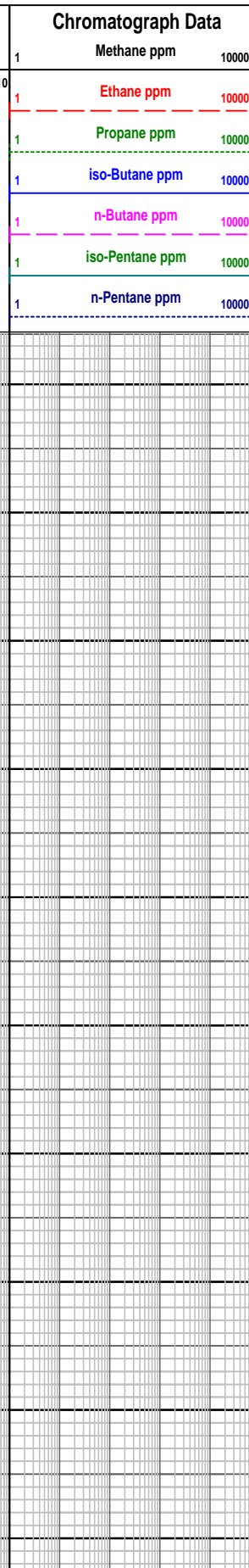
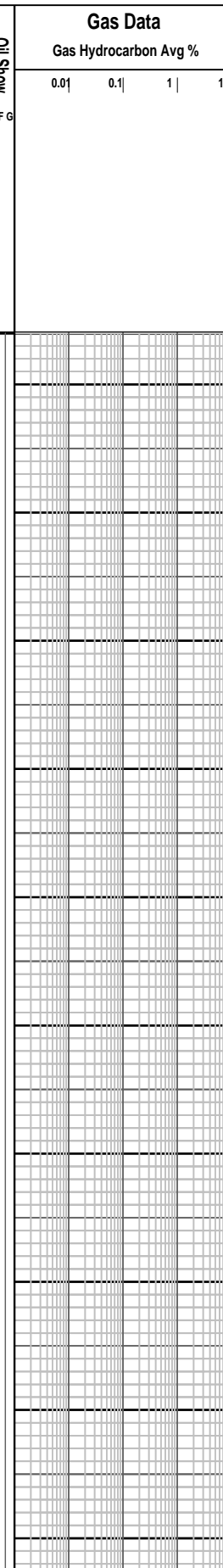
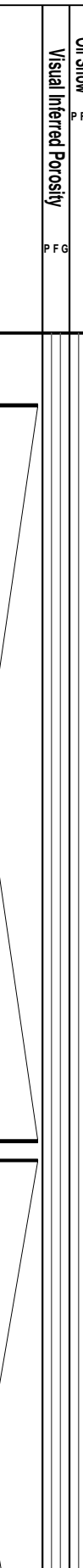
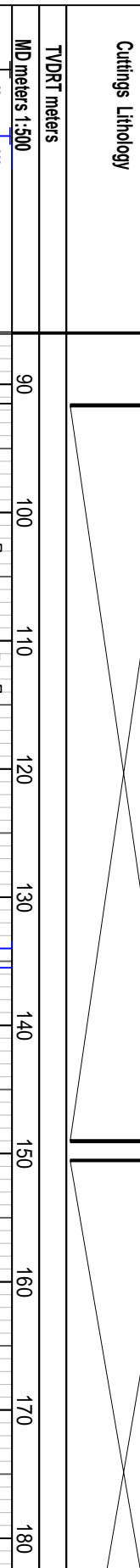
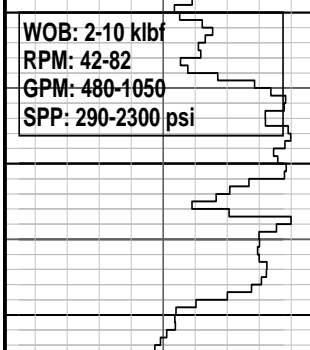
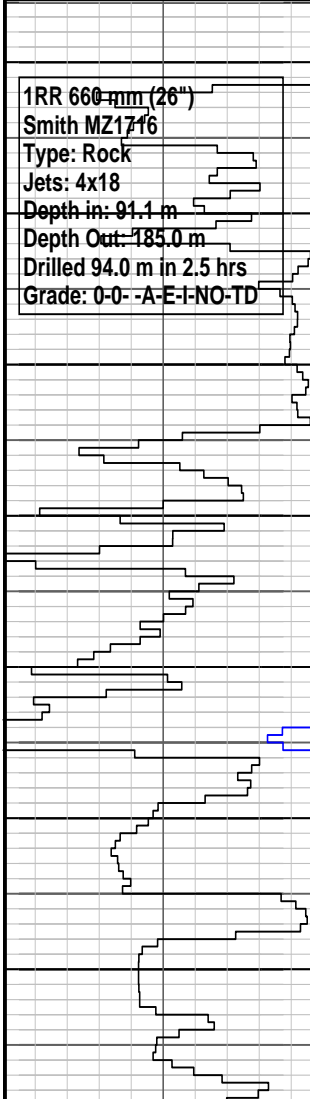
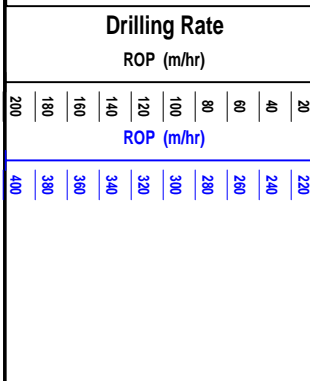
Interval : 86.00 - 936.17 meters

Created : 13/Apr/2008 5:02:11 AM

INTEQ

FORMATION EVALUATION LOG

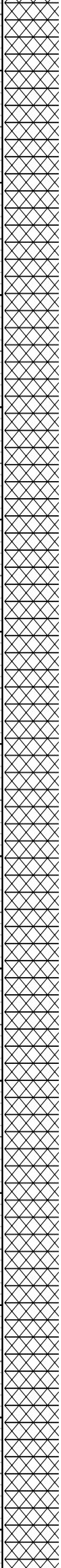
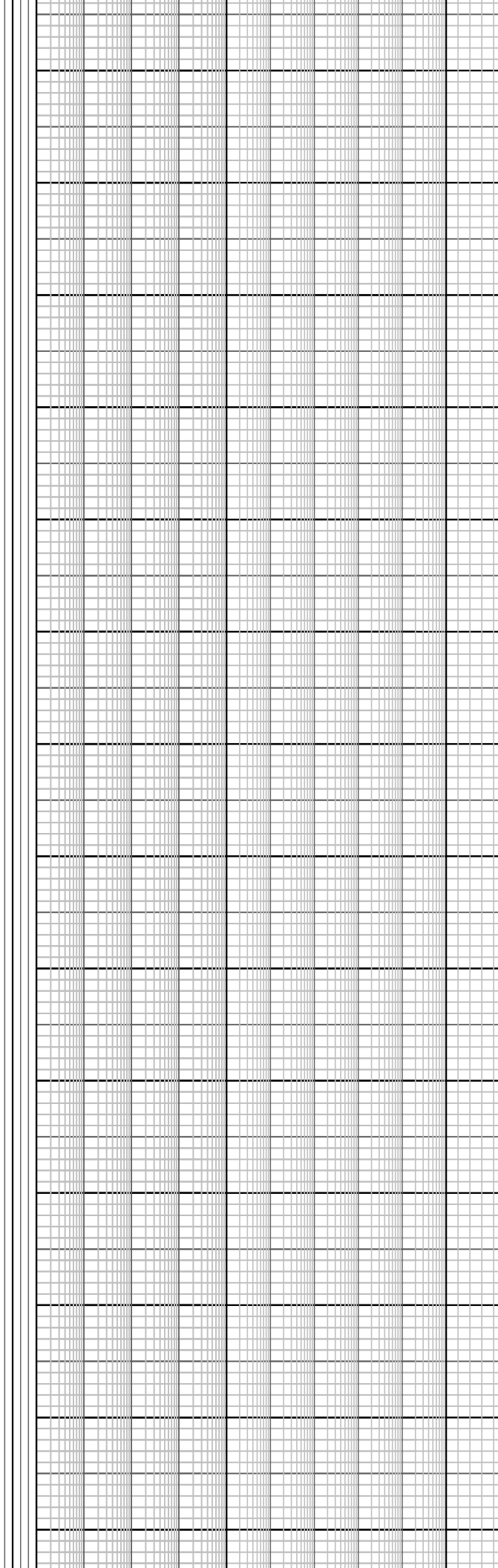
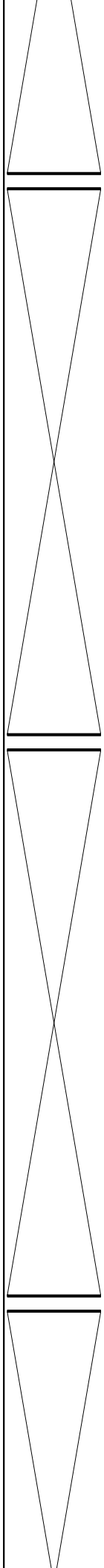
Drilling Rate ROP (m/hr)		MD meters	TVDRT meters	Cuttings Lithology	Oil Show P F G	Visual Inferred Porosity P F G	Gas Data Gas Hydrocarbon Avg %		Chromatograph Data Methane ppm		Calcmetry	Interpreted Lithology	Lithology Description		
200	180						160	140	120	100				80	60
1RR 660 mm (26") Smith MZ17f6 Type: Rock Jets: 4x18 Depth in: 91.1 m Depth Out: 185.0 m Drilled 94.0 m in 2.5 hrs Grade: 0-0 -A-E-I-NO-TD		90											RT - AHD: 37.0 mMDRT Water Depth: 54.1 mMDRT RT - Seabed: 91.1 mMDRT		
WOB: 2-10 klb RPM: 42-82 GPM: 480-1050 SPP: 290-2300 psi		160											Spud Speke South-1 at 1930 hrs on 07/04/2008		
		180											Drill with sea water and hi-vis pills, returns to seabed. 91.1 m to 903.0 m		



07/04/2008

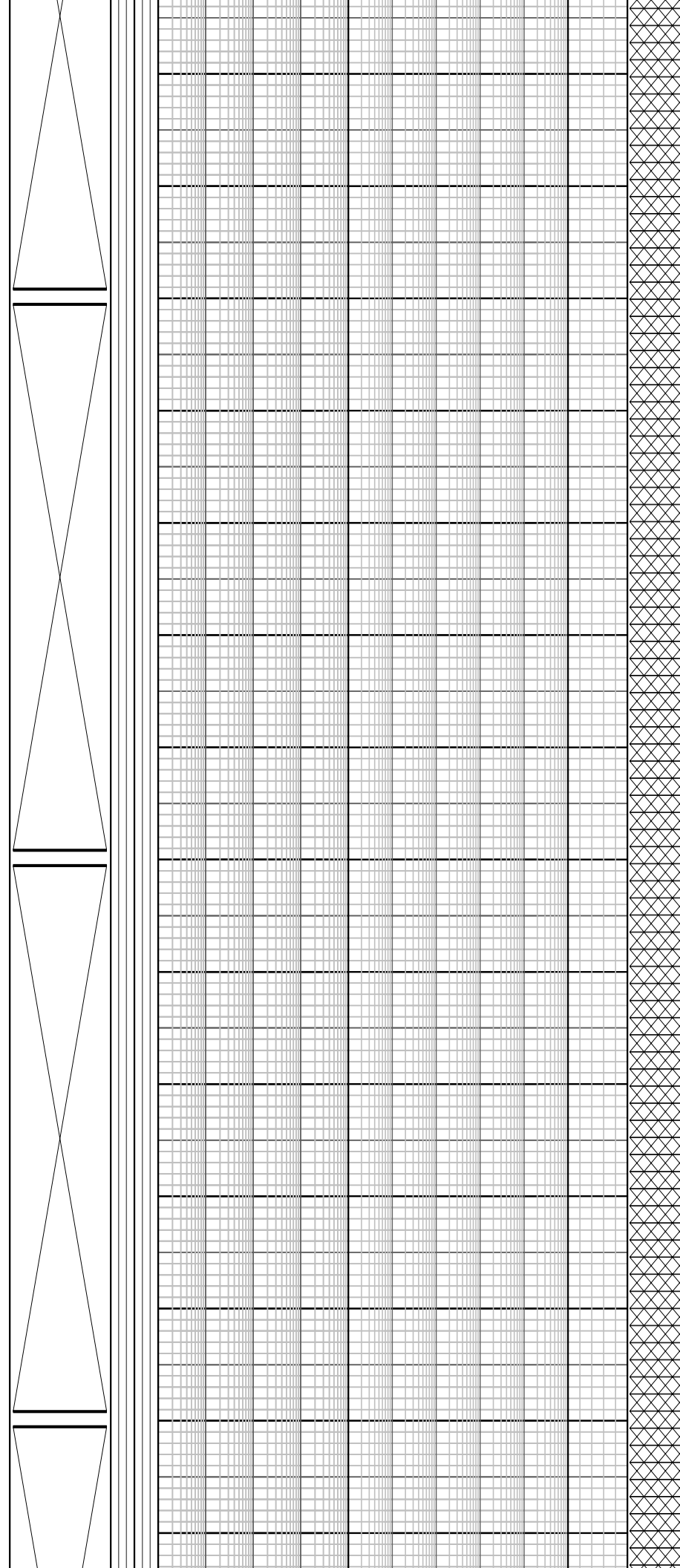
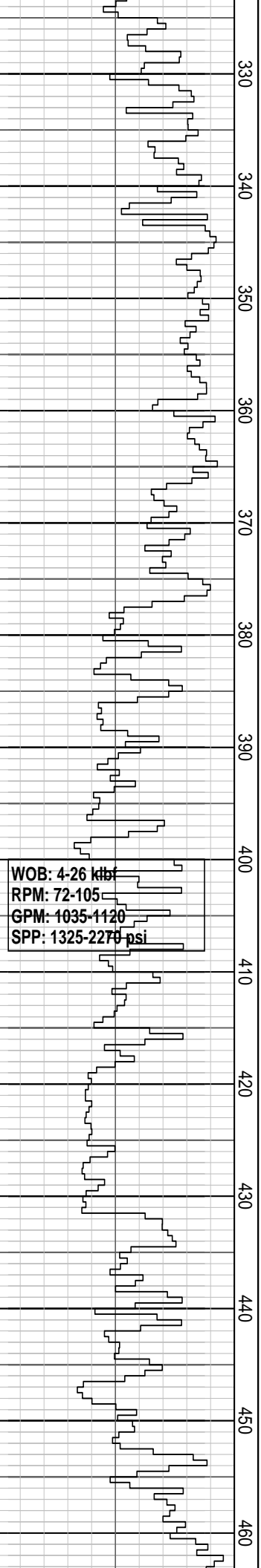
NB2 406 mm (16")
Hughes GXCIV
Type: Mill Tooth
Jets: 4x20
Depth in: 185.0 m
Depth Out: 903.0 m
Drilled 718.0 m in 22 hrs
Grade: 1-1-VT-A-0-I-NO-TD

190
200
210
220
230
240
250
260
270
280
290
300
310
320

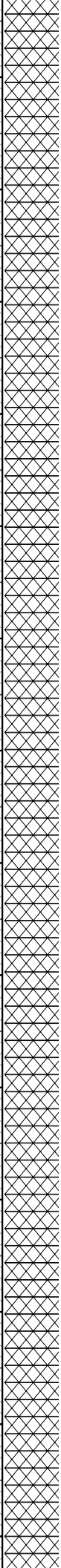
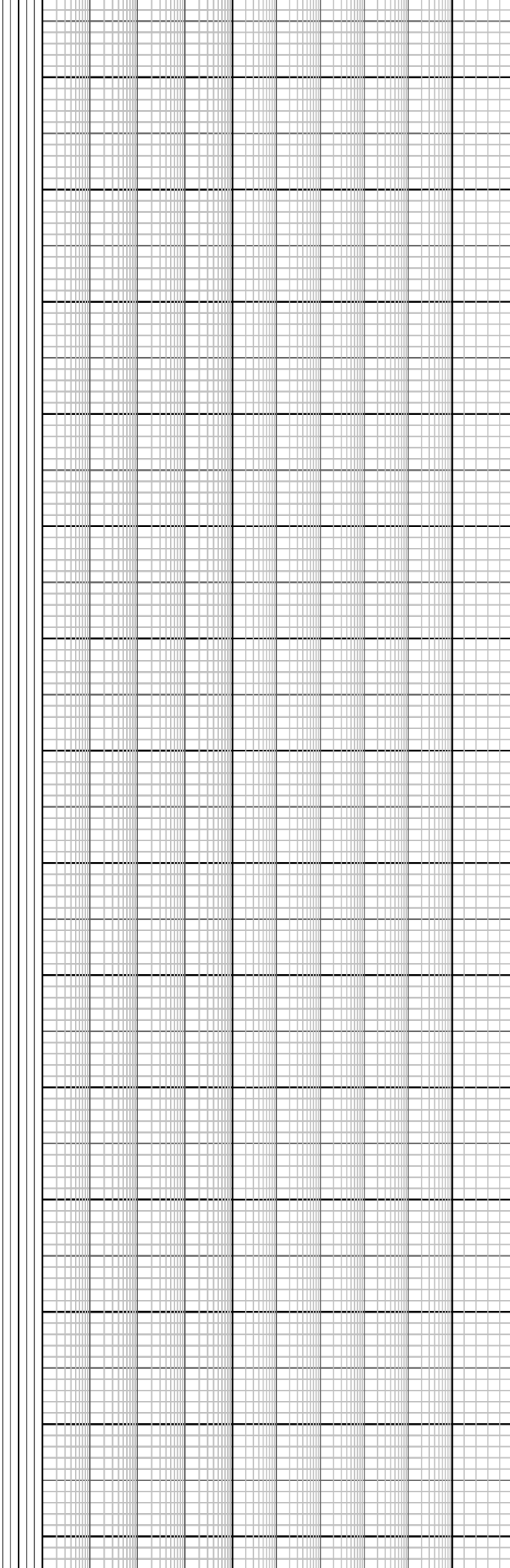
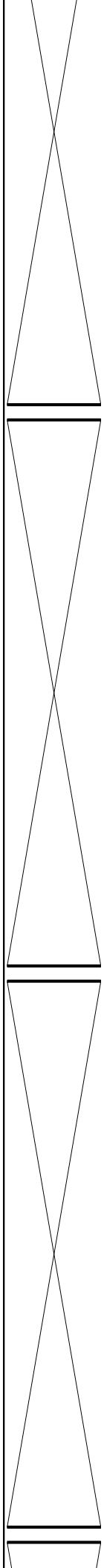
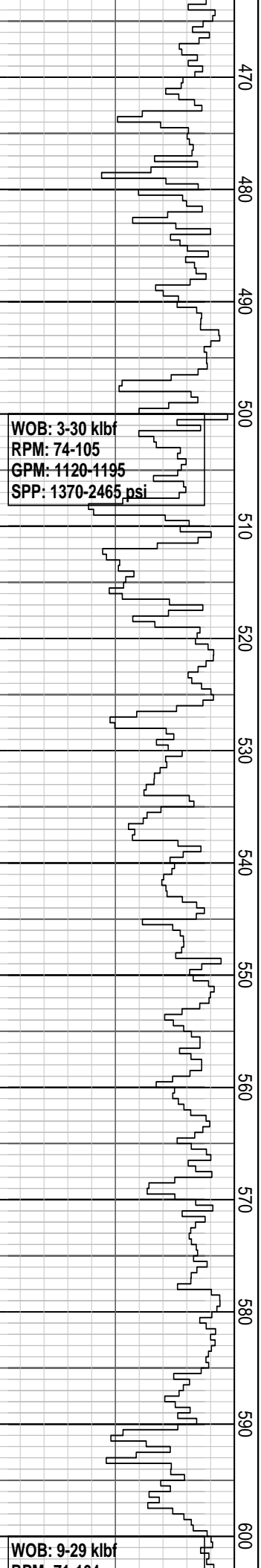


WOB: 2-13 kbf
RPM: 71-89
GPM: 1110-1120
SPP: 1285-2199 psi

Drill with sea water and hi-vis
pills, returns to seabed. 91.1
m to 903.0 m



Drill with sea water and hi-vis pills, returns to seabed. 91.1 m to 903.0 m

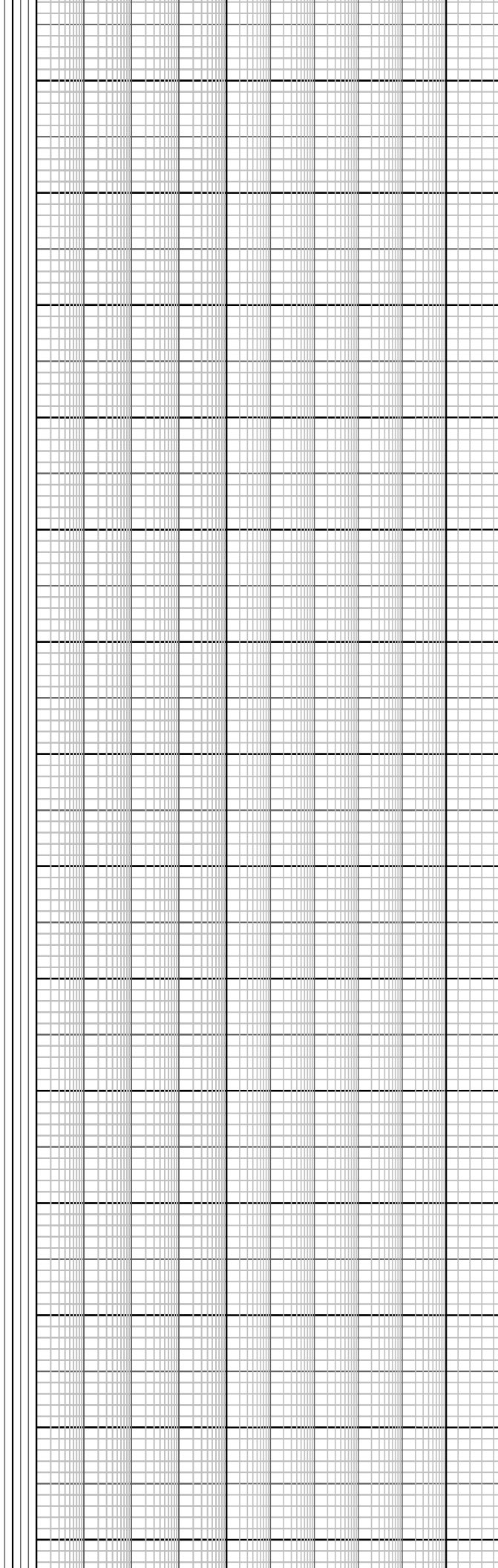
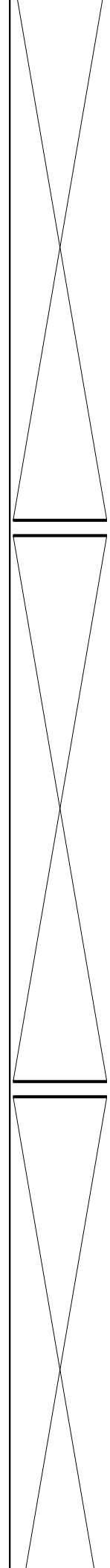
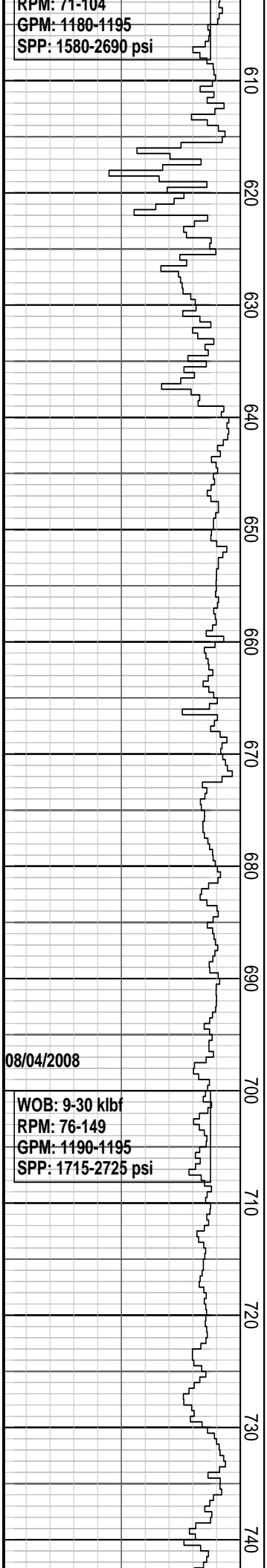


Drill with sea water and hi-vis

RPM: 71-104
GPM: 1180-1195
SPP: 1580-2690 psi

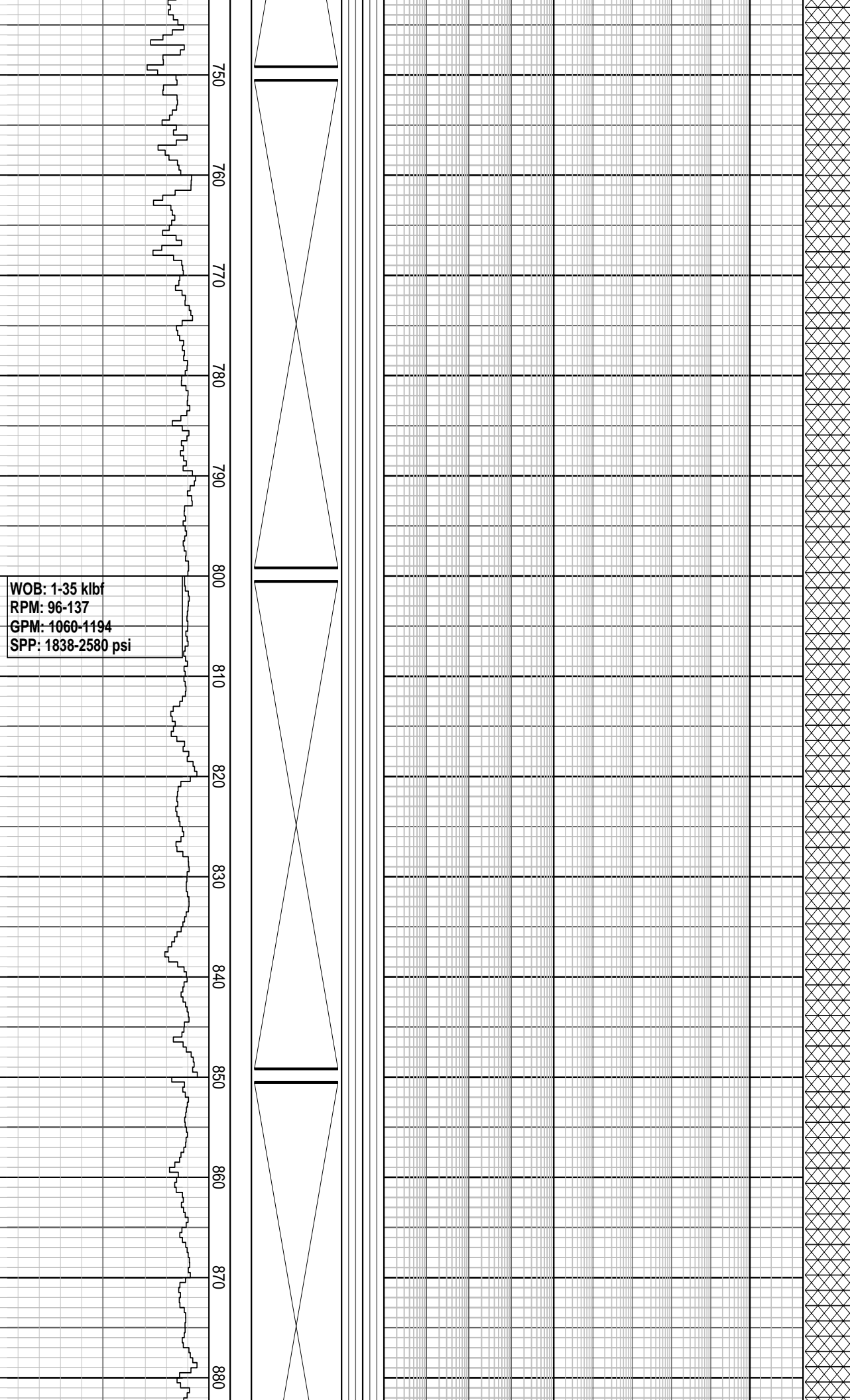
08/04/2008

WOB: 9-30 klf
RPM: 76-149
GPM: 1190-1195
SPP: 1715-2725 psi



fills, returns to seabed. 91.1
m to 903.0 m

Drill with sea water and hi-vis pills, returns to seabed. 91.1 m to 903.0 m



WOB: 1-35 klbf
RPM: 96-137
GPM: 1060-1194
SPP: 1838-2580 psi

